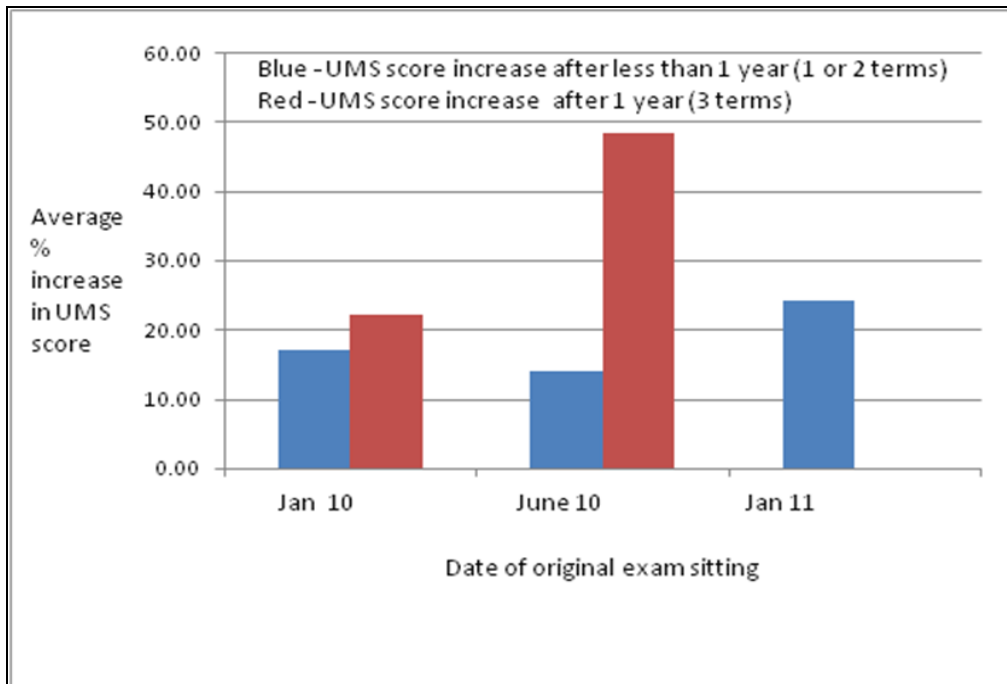


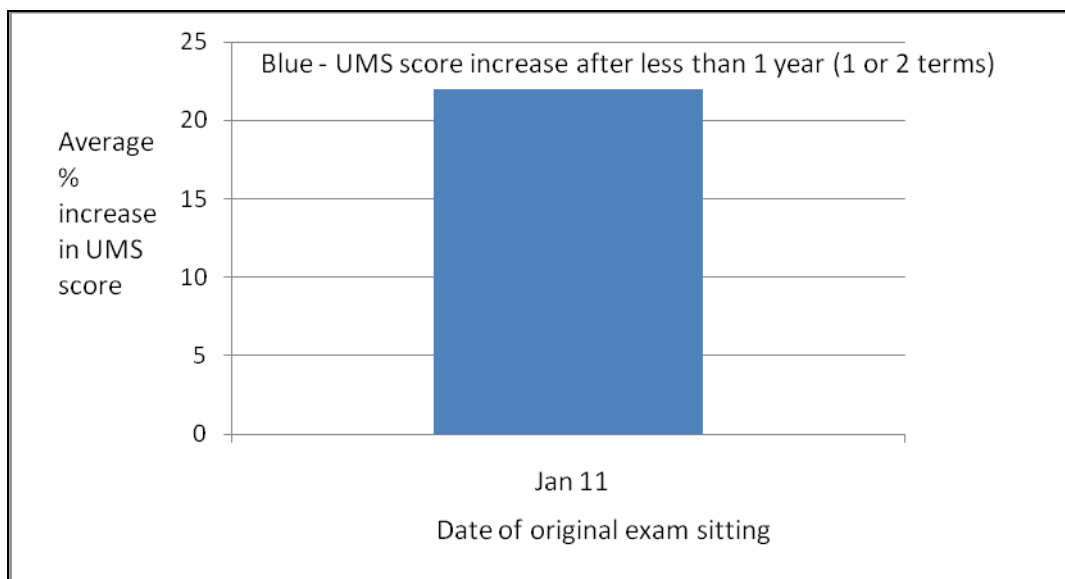
## OIC Exam results 2010–2011

### Improvements after resitting exams (value added measure)

#### A Level:



#### GCSE:



### JUNE 2011

A-LEVEL RESULTS	
A* & A = 27%	
Pass = 96%	
Grade	Percentage
A*	9%
A	18%
B	29%
C	19%
D	14%
E	8%
U	4%

GCSE RESULTS	
A* & A = 21%	
A* – C = 74%	
Grade	Percentage
A*	13%
A	8%
B	18%
C	34%
D	8%
E	13%
F	3%
G	0%

### January 2011

A-LEVEL RESULTS	
A* & A = 44%	
Pass = 100%	
Grade	Percentage
A*	22%
A	22%
B	11%
C	33%
D	11%
E	0%
U	0%

### JUNE 2010

A-LEVEL RESULTS	
A* & A = 34%	
Pass = 95%	
Grade	Percentage
A*	21%
A	13%
B	18%
C	23%
D	10%
E	10%
U	5%

GCSE RESULTS	
A* & A = 25%	
A* – C = 79%	
Grade	Percentage
A*	8%
A	17%
B	30%
C	25%
D	9%
E	2%
F	2%
G	0%